

GASOM DENTAL SOLUTION

MAX

LOGIC

MONO



Today's name in tomorrow's implant technology



ETGAR

medical implant systems

Etgar Medical Implant Systems brings to the market an entire spectrum of dental implant products based on its extensive expertise in the design and manufacture of miniature, ultra-high precision parts. Made from highest quality titanium alloy, Ti-6Al-4V ELI, all implants are biocompatible and treated with specially developed sandblasting and acid etching techniques that provide maximum bonding and longevity.

MAX

Ideal for easy implantation and loading



- Better load distribution
- Less crestal resorption
- Decreased crestal stress
- Promotes Osseointegration
- Easy insertion
- Perfect implant abutment connection
- One platform suits all diameters

LOGIC

Ideal for both single- and two-stage procedures



- Better load distribution
- Less crestal resorption
- Decreased crestal stress
- Promotes Osseointegration
- Easy insertion
- Minimal pressure on hard bone
- Perfect implant abutment connection
- One platform suits all diameters
- Simple restoration process

MONO

Ideal for maxillary lateral and mandibular incisors



- Perfect for immediate placement in all bone types
- Excellent gingival tolerance
- Enables easy penetration into smaller diameters
- Can be placed at bone level or below
- Better restoration control
- Stable crestal bone level
- Easy insertion
- Self tapping

All of Etgar's implants can be ordered with internal hex

■ Approval pending for conical connections



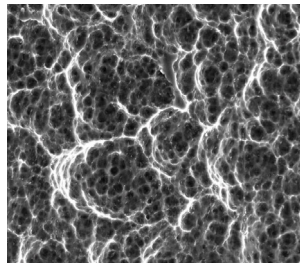
MAX

LOGIC

MONO

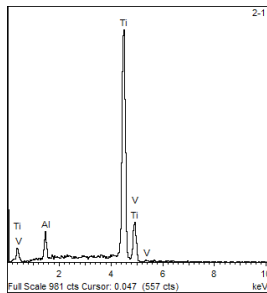
Etgar Implants are made of Ti-6Al-4V ELI titanium alloy, biocompatible and highly resistant to corrosion. Our unique Comprehensive Surface Treatment (CST) process leaves the surface free from residues and is compliant with all federal regulations.

SEM Analysis for Surface Structure



Following CST, the implant's surface is absolutely clean, free from all foreign particles.

Surface Chemistry



Chemical analysis at various stages shows the original Titanium alloy composition of the implant's surface with no contamination.



MAX Implants



The ESI MAX spiral implant achieves very high primary stability, ensuring easy and stable implant insertion. It is ideal for immediate implantation and loading, and is especially suitable for bone types III and IV.



DESIGN FEATURES

- Tapered body
- Tapered narrow core
- Double thread design
- Apical blades with straight apical border
- Greater surface area
- Threads reaching the coronal area
- Wide and variable thread step
- Ultra-high degree of precision

Ø mm	LENGTH mm				
	8	10	11.5	13	16
3.30	ESI-3.30-L8	ESI-3.30-L10	ESI-3.30-L11.5	ESI-3.30-L13	ESI-3.30-L16
3.75	ESI-3.75-L8	ESI-3.75-L10	ESI-3.75-L11.5	ESI-3.75-L13	ESI-3.75-L16
4.20	ESI-4.20-L8	ESI-4.20-L10	ESI-4.20-L11.5	ESI-4.20-L13	ESI-4.20-L16
5.00	ESI-5.00-L8	ESI-5.00-L10	ESI-5.00-L11.5	ESI-5.00-L13	ESI-5.00-L16
6.00	ESI-6.00-L8	ESI-6.00-L10	ESI-6.00-L11.5	ESI-6.00-L13	ESI-6.00-L16

Ordering example: ESI-4.20-L8

All of Etgar's implants can be ordered with internal hex

■ Approval pending for conical connections



The ECI LOGIC cylindrical implant is a straight wall, 2.5 mm internal hex for both single- and two-stage procedures. Its unique design results in a significantly larger surface area that enables increased contact between implant and bone.



DESIGN FEATURES

- 2.5 mm straight wall and straight core
- Double thread design
- Apical blades with straight apical border
- Threads reaching the coronal area
- Wide and variable thread step

Ø mm	LENGTH mm					
	6	8	10	11.5	13	16
3.30	-	ECI-3.30-L8	ECI-3.30-L10	ECI-3.30-L11.5	ECI-3.30-L13	ECI-3.30-L16
3.75	ECI-3.75-L6	ECI-3.75-L8	ECI-3.75-L10	ECI-3.75-L11.5	ECI-3.75-L13	ECI-3.75-L16
4.20	ECI-4.20-L6	ECI-4.20-L8	ECI-4.20-L10	ECI-4.20-L11.5	ECI-4.20-L13	ECI-4.20-L16
5.00	ECI-5.00-L6	ECI-5.00-L8	ECI-5.00-L10	ECI-5.00-L11.5	ECI-5.00-L13	ECI-5.00-L16
6.00	ECI-6.00-L6	ECI-6.00-L8	ECI-6.00-L10	ECI-6.00-L11.5	ECI-6.00-L13	ECI-6.00-L16

Ordering example: ECI-4.20-L6

All of Etgar's implants can be ordered with internal hex

■ Approval pending for conical connections

LOGIC Implants



MONO Implants



The EH MONO one piece implant and abutment is specially tailored for narrow alveolar ridges and is ideal for maxillary lateral and mandibular incisors.



DESIGN FEATURES

- Trans-gingival titanium oxide coating
- Tapered body and tapered core
- Single bone condensing thread design
- Narrow rounded apex

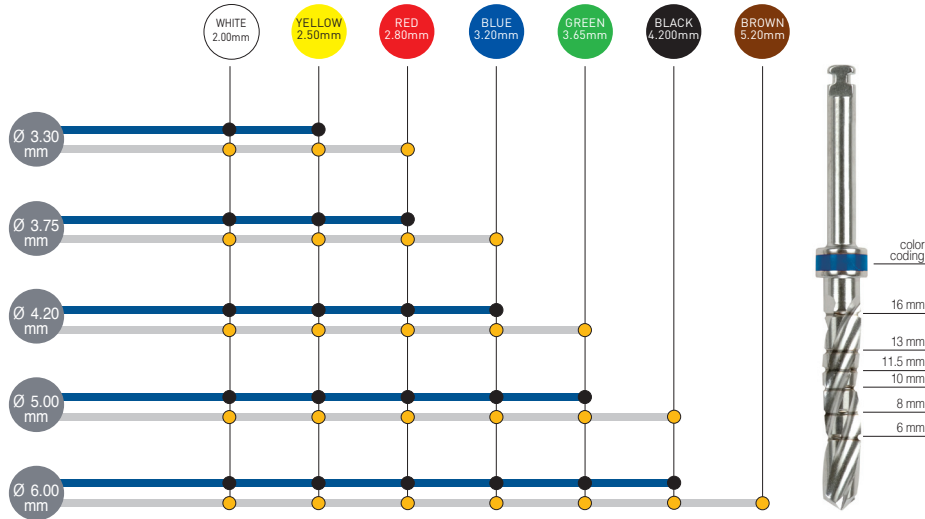
Ø mm	LENGTH mm			
	10	11.5	13	15
2.80	EH-2.80-L10	EH-2.80-L11.5	EH-2.80-L13	EH-2.80-L15
3.30	EH-3.30-L10	EH-3.30-L11.5	EH-3.30-L13	EH-3.30-L15
3.60	EH-3.60-L10	EH-3.60-L11.5	EH-3.60-L13	EH-3.60-L15
4.20	EH-4.20-L10	EH-4.20-L11.5	EH-4.20-L13	EH-4.20-L15

Ordering example: EH-3.30-L10



SURGICAL PROCEDURES

Implant Procedures



PACKAGING

Easy-open blister packs

First, make sure to wear surgical gloves before opening the vial. Then, peel back the blister cover to reveal the vial. Vial can be removed using the hand ratchet (ET 3030), wrench (ET 0007) or surgical screwdriver (ET 3050). In all three cases, connect the tool to the seal and gently rotate it to loosen the seal. Slowly pull out the implant.



Five implant pack



Etgar's vast range of abutments meets the specific requirements of all our internal hex implant systems. Composed of advanced biomaterial that provides a superior replacement for metal, they enable us to meet your exact needs with reliability and strength.

HEALING CAPS

Etgar's polished titanium surface healing caps enable excellent tissue acceptance when used to replace the cover screws after phase two, or with the initial one-stage implant replacement. They are also ideal for immediate loading.

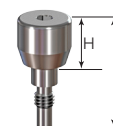
Healing Caps from Titanium Alloy

Made from Titanium Grade Five, these healing caps offer:

- Low specific weight
- High strength to weight ratio
- High modulus of elasticity
- Very high corrosion resistance
- Excellent general biocompatibility

CATALOG No.	ø mm	LENGTH mm	HEIGHT mm
EI 5002	4.7	8	2
EI 5003	4.7	9	3
EI 5004	4.7	10	4
EI 5005	4.7	11	5
EI 5006	4.7	12	6
EI 5007	4.7	13	7

Standard: Suitable for all implant diameters



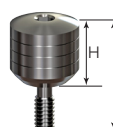
CATALOG No.	ø mm	LENGTH mm	HEIGHT mm
EI 5102	3.8	8	2
EI 5103	3.8	9	3
EI 5104	3.8	10	4
EI 5105	3.8	11	5
EI 5106	3.8	12	6
EI 5107	3.8	13	7

Narrow: Suitable for all implant diameters



CATALOG No.	ø mm	LENGTH mm	HEIGHT mm
EI 5203	6	9	3
EI 5204	6	10	4
EI 5205	6	11	5
EI 5206	6	12	6

Wide: Suitable for 5mm and 6 mm implant diameters

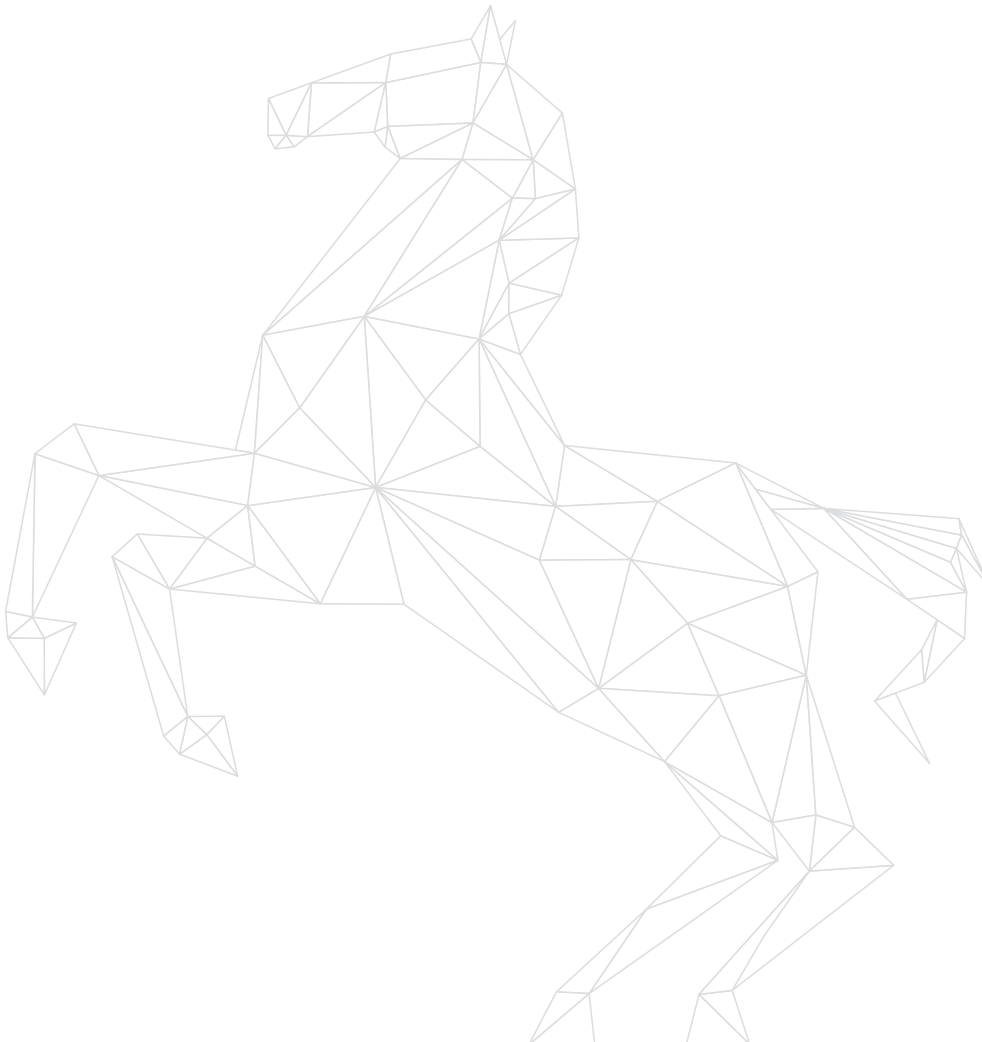
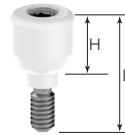


Healing Caps from Zirconia

- Low bacterial adhesion helps avoid periodontal problems
- No allergic reactions
- Safeguards against corrosion
- Extraordinary long-term strength and durability
- Acid resistant
- Biocompatible

CATALOG No.	∅ mm	LENGTH mm	HEIGHT mm
EIZ 5002	4.7	8	2
EIZ 5003	4.7	9	3
EIZ 5004	4.7	10	4
EIZ 5005	4.7	11	5
EIZ 5006	4.7	12	6
EIZ 5007	4.7	13	7

Standard: Suitable for all implant diameters





ABUTMENTS FROM ADVANCED BIOMATERIALS

Choose high grade titanium, or one of our advanced biomaterials that provides an excellent alternative. Both ways, Etgar's abutments enable us to meet your exact needs with reliability and superior strength.

The Titanium abutment advantage:

- Low specific weight
- High strength to weight ratio
- High modulus of elasticity
- Very high corrosion resistance
- Excellent general biocompatibility

The Zirconia abutment advantage:

- Low bacterial adhesion helps avoid periodontal problems
- No allergic reactions
- Safeguards against corrosion
- Extraordinary long-term strength and durability
- Acid resistant
- Biocompatible

The Peek Polymer advantage:

- Engineered for safety and bio-stability
- Proven history of clinical results
- Excellent general biocompatibility
- High performance
- Superior imaging properties

The Burn Out advantage:

- Homogenous and bend-resistant
- Enables inexpensive manufacturing



Abutments

Standard Straight

CATALOG No.	ø mm	LENGTH mm		MATERIAL
EI 6209	4.76	9	Standard	Ti-6Al-4V ELI
EI 6213	4.76	13	Long	Ti-6Al-4V ELI
EI 6411	3.8	11	Narrow	Ti-6Al-4V ELI



Straight with Shoulder

CATALOG No.	ø mm	LENGTH mm	SHOULDER mm	MATERIAL
EI 6001	4.76	9	1	Ti-6Al-4V ELI
EI 6002	4.76	10	2	Ti-6Al-4V ELI
EI 6003	4.76	11	3	Ti-6Al-4V ELI
EI 6004	4.76	12	4	Ti-6Al-4V ELI



Anatomic

CATALOG No.	ø mm	LENGTH mm	PLATFORM mm	MATERIAL
EI 6301	4.76	9	1	Ti-6Al-4V ELI
EI 6302	4.76	10	2	Ti-6Al-4V ELI
EI 6303	4.76	11	3	Ti-6Al-4V ELI
EI 6304	4.76	12	4	Ti-6Al-4V ELI



Temporary Peek Esthetic

CATALOG No.	ø mm	LENGTH mm	PLATFORM mm	MATERIAL
EIPK 6001	4.76	10	1	PEEK
EIPK 6002	4.76	11	2	PEEK
EIPK 6003	4.76	12	3	PEEK



Temporary Peek Cerium Esthetic Straight

CATALOG No.	ø mm	LENGTH mm	PLATFORM mm	MATERIAL
EIPKC 6005	4.76	9.5	0.5	PEEK
EIPKC 6001	4.76	10	1	PEEK



Final Burn Out Straight

CATALOG No.	ø mm	LENGTH mm	PLATFORM mm	MATERIAL
EIP 6001	4.76	10	1	BURN OUT
EIP 6002	4.76	11	2	BURN OUT
EIP 6003	4.76	12	3	BURN OUT



Cerium Esthetic Straight

CATALOG No.	ø mm	LENGTH mm	PLATFORM mm	MATERIAL
EIPC 6005	4.76	8.5	0.5	BURN OUT
EIPC 6001	4.76	10	1	BURN OUT



Direct plastic/hex/round

CATALOG No.	ø mm	LENGTH mm	PLATFORM mm	MATERIAL
EIH 8113	4.5	15	1	PLASTIC
EIO 8012	4.5	15	1	PLASTIC
EIH 3112	4.5	12	1	PLASTIC & TITANIUM



Delrin hex/ non hex

CATALOG No.	ø mm	LENGTH mm	PLATFORM mm	MATERIAL
EIH 8213	6.0	12	1	PLASTIC
EIO 8212	6.0	12	1	PLASTIC



Esthetic Abutments

Straight

CATALOG No.	ø mm	LENGTH mm	PLATFORM mm	MATERIAL
EIZ 60005	4.76	8.5	0.5	ZIRCONIA
EIZ 6001	4.76	9	1	ZIRCONIA
EIZ 6002	4.76	10	2	ZIRCONIA
EIZ 6003	4.76	11	3	ZIRCONIA



Cerium Esthetic Straight

CATALOG No.	ø mm	LENGTH mm	PLATFORM mm	MATERIAL
EIZC 60005	4.76	8.5	0.5	ZIRCONIA
EIZC 6001	4.76	9	1	ZIRCONIA

Esthetic Straight with Titanium Base

CATALOG No.	ø mm	LENGTH mm	PLATFORM mm	MATERIAL
EIZT 60005	4.76	8.5	0.5	ZIRCONIA
EIZT 6001	4.76	9	1	ZIRCONIA
EIZT 6002	4.76	10	2	ZIRCONIA
EIZT 6003	4.76	11	3	ZIRCONIA

Abutments - Angulated 15°

Standard Straight

CATALOG No.	ø mm	LENGTH mm		MATERIAL
EI 7015	4.76	9	Standard	Ti-6Al-4V ELI
EI 7115	4.76	12	Long	Ti-6Al-4V ELI
EI 7515	3.8	9	Narrow	Ti-6Al-4V ELI



Anatomic

CATALOG No.	ø mm	LENGTH mm	SHOULDER mm	MATERIAL
EI 7151	4.76	9	1	Ti-6Al-4V ELI
EI 7152	4.76	10	2	Ti-6Al-4V ELI
EI 7153	4.76	11	3	Ti-6Al-4V ELI
EI 7154	4.76	12	4	Ti-6Al-4V ELI



Temporary Peek

CATALOG No.	ø mm	LENGTH mm	PLATFORM mm	MATERIAL
EIPK 7151	4.76	9	1	PEEK
EIPK 7152	4.76	10	2	PEEK
EIPK 7153	4.76	11	3	PEEK



Temporary Peek Cerium

CATALOG No.	ø mm	LENGTH mm	PLATFORM mm	MATERIAL
EIPKC 71505	4.76	8.5	0.5	PEEK
EIPKC 7151	4.76	9	1	PEEK



Final Burn Out

CATALOG No.	ø mm	LENGTH mm	PLATFORM mm	MATERIAL
EIP 7151	4.76	9	1	BURN OUT
EIP 7152	4.76	10	2	BURN OUT
EIP 7153	4.76	11	3	BURN OUT



Burn Out Cerium

CATALOG No.	ø mm	LENGTH mm	PLATFORM mm	MATERIAL
EIPC 71505	4.76	8.5	0.5	PEEK
EIPC 7151	4.76	9	1	PEEK



Abutments - Angulated 15°

Zirconia Esthetics

CATALOG No.	ø mm	LENGTH mm	PLATFORM mm	MATERIAL
EIZ 71505	4.76	7.5	0.5	ZIRCONIA
EIZ 7151	4.76	8	2	ZIRCONIA
EIZ 7152	4.76	9	3	ZIRCONIA
EIZ 7153	4.76	10	4	ZIRCONIA



Zirconia Cerium

CATALOG No.	ø mm	LENGTH mm	PLATFORM mm	MATERIAL
EIZC 71505	4.76	7.5	0.5	ZIRCONIA
EIZC 7151	4.76	8	1	ZIRCONIA

Zirconia Straight with Titanium Base

CATALOG No.	ø mm	LENGTH mm	PLATFORM mm	MATERIAL
EIZT 71505	4.76	7.5	0.5	ZIRCONIA
EIZT 7151	4.76	9	1	ZIRCONIA
EIZT 7152	4.76	9	2	ZIRCONIA
EIZT 7153	4.76	10	3	ZIRCONIA



Abutments - Angulated 25°

Standard Straight

CATALOG No.	ø mm	LENGTH mm		MATERIAL
EI 7025	4.76	9	Standard	Ti-6Al-4V ELI
EI 7125	4.76	12	Long	Ti-6Al-4V ELI



Anatomic

CATALOG No.	ø mm	LENGTH mm	Shoulder mm	MATERIAL
EI 7251	4.76	9	1	Ti-6Al-4V ELI
EI 7252	4.76	10	2	Ti-6Al-4V ELI
EI 7253	4.76	11	3	Ti-6Al-4V ELI



Temporary Peek

CATALOG No.	ø mm	LENGTH mm	PLATFORM mm	MATERIAL
EIPK 7251	4.76	9	1	PEEK
EIPK 7252	4.76	10	2	PEEK
EIPK 7253	4.76	11	3	PEEK



Temporary Peek Cerium

CATALOG No.	ø mm	LENGTH mm	PLATFORM mm	MATERIAL
EIPKC 72505	4.76	8.5	0.5	PEEK
EIPKC 7251	4.76	9	1	PEEK



Final Burn Out

CATALOG No.	ø mm	LENGTH mm	PLATFORM mm	MATERIAL
EIP 7251	4.76	9	1	BURN OUT
EIP 7252	4.76	10	2	BURN OUT
EIP 7253	4.76	11	3	BURN OUT



Burn Out Cerium

CATALOG No.	ø mm	LENGTH mm	PLATFORM mm	MATERIAL
EIPC 72505	4.76	8.5	0.5	PEEK
EIPC 7251	4.76	9	1	PEEK



Abutments - Angulated 25°

Zirconia Esthetics

CATALOG No.	ø mm	LENGTH mm	PLATFORM mm	MATERIAL
EIZ 72505	4.76	7.5	0.5	ZIRCONIA
EIZ 7251	4.76	8	2	ZIRCONIA
EIZ 7252	4.76	9	3	ZIRCONIA
EIZ 7253	4.76	10	4	ZIRCONIA



Zirconia Cerium

CATALOG No.	ø mm	LENGTH mm	PLATFORM mm	MATERIAL
EIZC 72505	4.76	7.5	0.5	ZIRCONIA
EIZC 7251	4.76	8	1	ZIRCONIA



Zirconia Straight with Titanium Base

CATALOG No.	ø mm	LENGTH mm	PLATFORM mm	MATERIAL
EIZT 72505	4.76	7.5	0.5	ZIRCONIA
EIZT 7251	4.76	9	1	ZIRCONIA
EIZT 7252	4.76	9	2	ZIRCONIA
EIZT 7253	4.76	10	3	ZIRCONIA

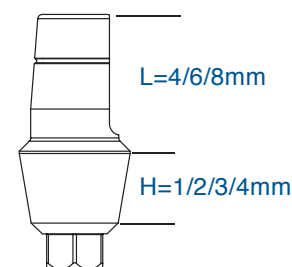


Anatomic Abutment Kits are also available in the following dimensions:
Height: 4, 6 or 8 mm; Length: 1, 2, 3 or 4 mm; All diameters: 4.76 mm.



ANATOMIC ABUTMENT KITS

DESCRIPTION	CATALOG No.	ø mm	H mm	L mm
Abutment Kit	EIAS-6041	4.76	1	4
Abutment Kit	EIAS-6042	4.76	2	4
Abutment Kit	EIAS-6043	4.76	3	4
Abutment Kit	EIAS-6044	4.76	4	4
Abutment Kit	EIAS-6061	4.76	1	6
Abutment Kit	EIAS-6062	4.76	2	6
Abutment Kit	EIAS-6063	4.76	3	6
Abutment Kit	EIAS-6064	4.76	4	6
Abutment Kit	EIAS-6081	4.76	1	8
Abutment Kit	EIAS-6082	4.76	2	8
Abutment Kit	EIAS-6083	4.76	3	8
Abutment Kit	EIAS-6084	4.76	1	8



BALL ATTACHMENTS

Etgar's Ball attachments, made of Titanium Alloy Ti-6Al-4V ELI, are ideal for implants used with overdentures. To ensure a perfect fit when connecting the implant to the prosthetic, silicon in various ranges of hardness is used.

CATALOG No.	ø mm	LENGTH mm	PLATFORM mm	MATERIAL
EI 55005	4	7.5	0.5	Ti-6Al-4V ELI
EI 5501	4	8	1	Ti-6Al-4V ELI
EI 5502	4	9	2	Ti-6Al-4V ELI
EI 5503	4	10	3	Ti-6Al-4V ELI
EI 5504	4	11	4	Ti-6Al-4V ELI
EI 5505	4	12	5	Ti-6Al-4V ELI
EI 5506	4	13	6	Ti-6Al-4V ELI
EI 5507	4	14	7	Ti-6Al-4V ELI



CAPS



METAL CAP	STANDARD	SOFT	HARD
EBMC 5551	ESC 5552	ESC 5553	ESC 5554



BALL ATTACHMENT KITS

CATALOG No.	ø mm	LENGTH mm	HEIGHT mm
EIBS-5501	4	8	1
EIBS-5502	4	9	2
EIBS-5503	4	10	3
EIBS-5504	4	11	4



IMPRESSION COPINGS

To use: Prepare an individual acrylic open lab tray and connect an impression coping to each implant. Use a mono-phase impression material, Impregum™, for example, and an acrylic such as Duralay™, to anchor each coping to the tray. Connect the analogs and establish a stone model.

Open Tray

CATALOG No.	ø mm	LENGTH mm	
EI 8610	4.70	10	Use with 9.4 mm screw
EI 8615	4.70	15	Use with 9.4 mm screw
EI 8620	-	-	Transfer screw



Closed Tray Transfer Pick-up

CATALOG No.	ø mm	LENGTH mm
EI 8510	4.70	10
EI 8515	4.70	15



ESTHETIC CONNECTIONS

Components

Connecting Screw

CATALOG No.	ABUTMENT COLLAR	LENGTH mm	MATERIAL
EIS 6705	0.5	6	Ti-6Al-4V ELI
EIS 6706	1.5	7	Ti-6Al-4V ELI
EIS 6707	2.5	8	Ti-6Al-4V ELI



Esthetic Abutment Connection

CATALOG No.	LENGTH mm	MATERIAL
EIH 6704	12	PLASTIC



Esthetic Abutment Connection

CATALOG No.	ABUTMENT COLLAR	LENGTH mm	MATERIAL
EIS 6701	0.5	10.7	Ti-6Al-4V ELI
EIS 6702	1.5	11.3	Ti-6Al-4V ELI
EIS 6703	2.5	12.3	Ti-6Al-4V ELI



Order the components according to the color guide ■ EIH is suitable for all sizes

Screws

CATALOG No.		MATERIAL
ESS 7.8	Packaged with all angulated abutments	Ti-6Al-4V ELI
ESS 8.3	Packaged with all angulated and straight abutments	Ti-6Al-4V ELI
ESS 9.4	Packaged with all straight and UCLA abutments	Ti-6Al-4V ELI




Analogs










CATALOG No.	ø mm	IMPLANT TYPE	MATERIAL
EIO 8080	4.0	Standard-L12	STAINLESS STEEL
EIO 8081	4.0	Standard-L12	Ti-6Al-4V ELI
EIO 8082	3.3	Mono-Implant-L17	STAINLESS STEEL



MULTI UNITS

		
EI 4001 Straight Multi Unit Adaptor H-1 mm	EI 4002 Straight Multi Unit Adaptor H-2 mm	EI 4003 Straight Multi Unit Adaptor H-3 mm
		
EI 4181 Straight Multi Unit Adaptor 18 H-1 mm	EI 4182 Straight Multi Unit Adaptor 18 H-2 mm	EI 4183 Straight Multi Unit Adaptor 18 H-3 mm
		
EI 4301 Straight Multi Unit Adaptor 30 H-1 mm	EI 4302 Straight Multi Unit Adaptor 30 H-2 mm	EI 4303 Straight Multi Unit Adaptor 30 H-3 mm

MULTI UNIT ACCESSORIES

		
EI 4988 Plastic Sleeve Screw included	EI 4999 Titanium Sleeve Screw included	EI 4498 Titanium Short Sleeve Screw included
		
EI 4775 Open Tray Transfer Screw included	EI 4770 Closed Tray Transfer	EI 4765 Plastic for Closed Tray Transfer
		
EI 4500 Healing Cap for Multi Unit	EI 4812 Analog for Multi Unit	EI 4333 3D Scanning Device



GASOM DENTAL SOLUTION

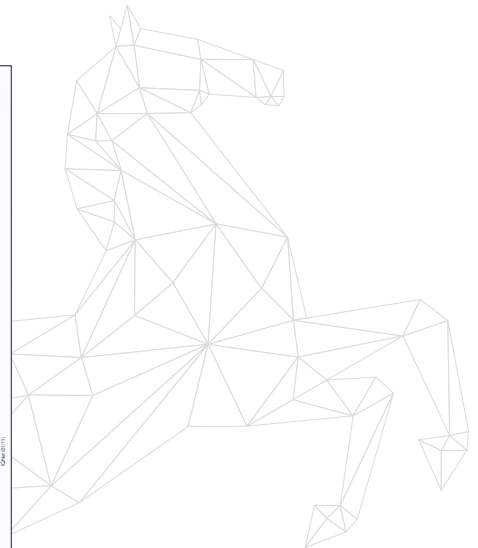


Etgar Medical Implant Systems is a division of Etgar Medical Instruments, a company founded in 1991 to provide precision machining services to medical device companies. Our design and manufacturing expertise is based on extensive know-how accumulated from years of working with the biggest names in the business. Our team of highly trained technicians and craftspeople and a manufacturing facility equipped with state of the art machinery ensure excellence at every stage of the production process. As a dental professional you will experience the same high quality products sold by the market leaders without the overhead of a large company built into the price.

Compliance with International Quality Standards

All of our products are manufactured and packaged to meet mandatory certifications for medical device production including **MDD 93/42/EEC**, **ISO 9001:2008**, **13485:2003**. Etgar's reputation depends on ensuring that every product that leaves our factory meets the most stringent quality assurance standards.

We built our reputation on quality and as such it's built to last!



ETGAR

medical implant systems

36 Mircea Voda St., Bucharest Romania

Tel: + 40 720535516

Email: office@gasom.ro

www.gasom.ro

www.etgar-implants.com

Today's name in tomorrow's implant technology

GASOM
Dental Solution

Unic distributor in Romania